



Apt 2 Beechvale

La Grande Route De St Jean
St John
Jersey
JE34FL

£470,000

FC143

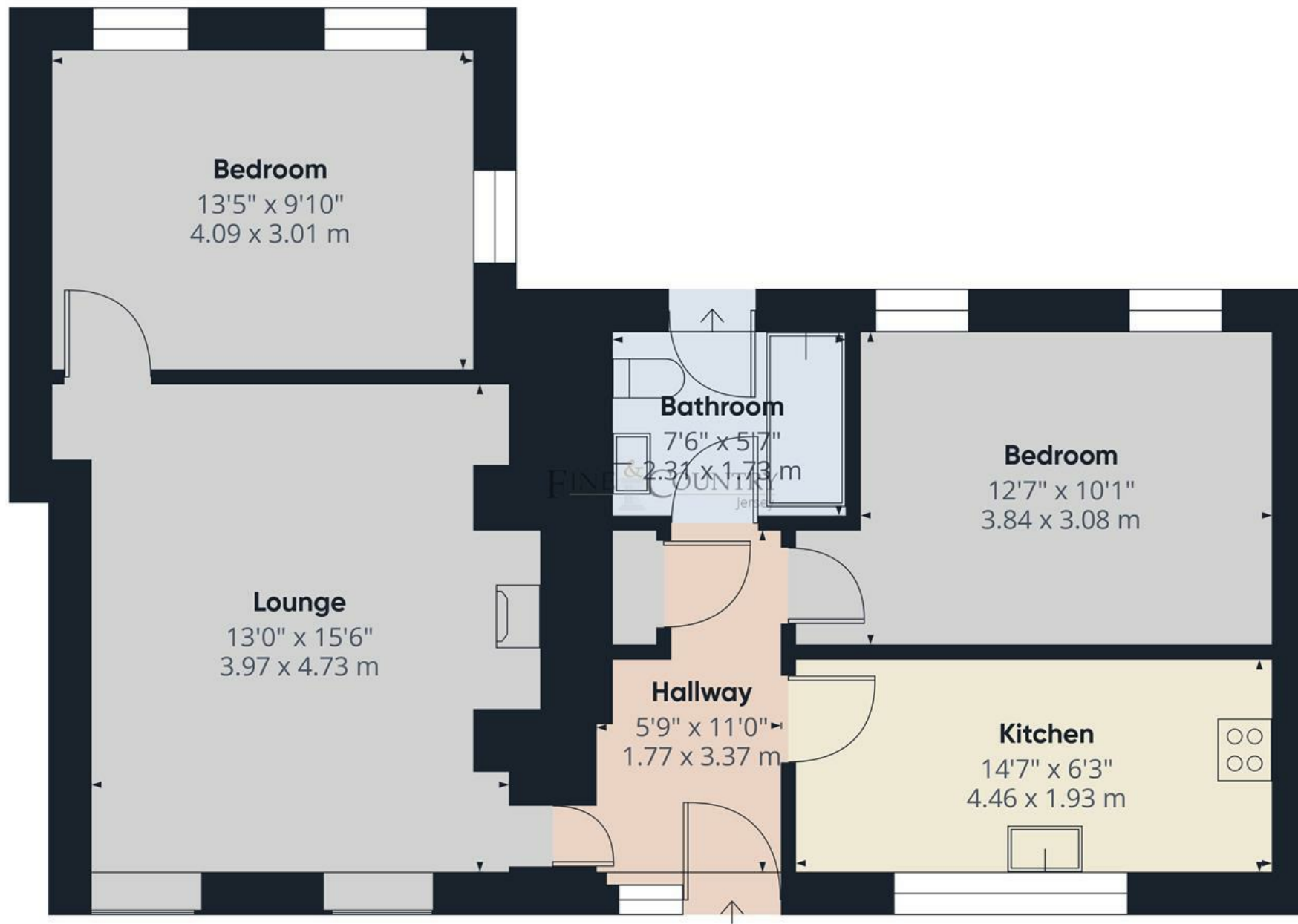
FLYING FREEHOLD - This attractive two-bedroom apartment is tucked away along a quiet country lane near Sion Village, offering a peaceful rural setting. The property features a generous living room with a charming granite fireplace, creating a warm and welcoming living space.

A separate, fully fitted kitchen comes complete with all appliances, while the accommodation also includes two well-proportioned double bedrooms. A modern house bathroom completes the interior.

Externally, the apartment benefits from a private parking area with space for approximately five vehicles, which could alternatively be used in part as a private garden area. In addition, the property enjoys access to a large communal garden and a designated clothes-drying area.







Approximate total area⁽¹⁾

690 ft²

64.2 m²

(1) Excluding balconies and terraces

Calculations reference the RICS IPMS 3C standard. Measurements are approximate and not to scale. This floor plan is intended for illustration only.

GIRAFFE360

Outside

Private parking area for 5 cars which can alternatively be used in part as a private garden area.

Large communal garden.

Drying area

Services

All mains excluding gas.

Double glazing.

Electric Heating

Service charge tbc

Directions

Travelling north on La Grand route de St John. Take the first left down a private drive after the new Co-op En route.

Call us on

01534 888855

jersey@fineandcountry.com

www.fineandcountry.je

5 King Street, St Helier, Jersey, JE2 4WF

MONEY LAUNDERING REGULATION - Once an offer is accepted and negotiations for the purchase of a property are entered into, the prospective purchasers will be asked to produce photographic identification and proof of residency documentation, e.g. current utility bill and ID. This is in order for us to comply with the current Money Laundering Legislation.

Fine & Country Jersey advises prospective purchasers that we have prepared these sales particulars as a general guide only. We have not carried out a detailed survey, nor tested the services, appliances and specified fittings. Room sizes are approximate and rounded; they are taken between internal wall surfaces and therefore include cupboards/shelves etc, accordingly they should not be relied upon when purchasing fittings. Carpet, curtains/blinds and kitchen equipment, whether fitted or not, are deemed to be removable by the vendor unless specifically itemised within these particulars and/or within the property inventory. These particulars are supplied on the understanding that all negotiations are conducted through Fine & Country Jersey, their accuracy is not guaranteed nor do they form part of any contract.